

Supplementary Information

Innovative Discoveries on the Laws of Cosmology and Humanity: New Perspectives on the World

Abdi-Basid Ibrahim Adan*

The Abdi-Basid Courses Institute (TABCI), Online Platform and Research Institution for Science, founded in 2017, Dakar, Senegal

*Corresponding author.

E-mail addresses: abdi-basid@outlook.com (Adan, A.-B. I.).

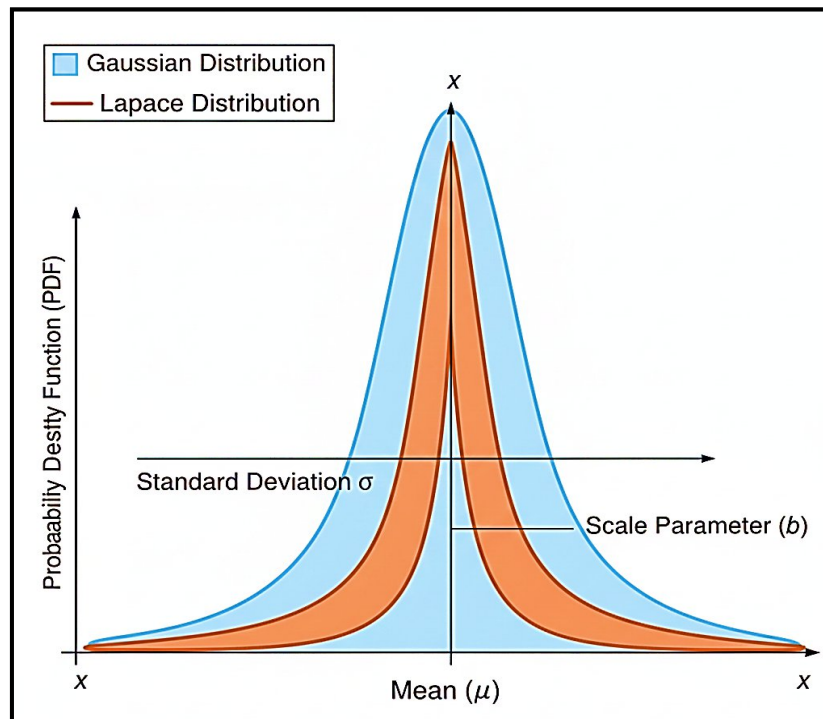


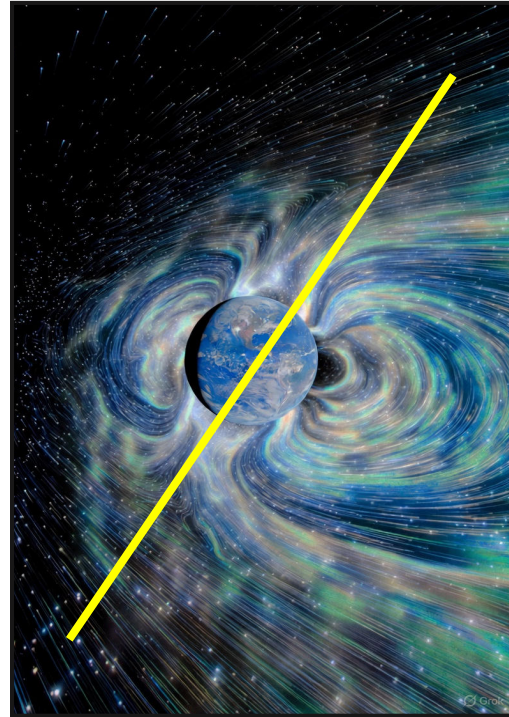
Figure S1 :

Gauss-Laplace Distribution. Generated with the assistance of AI.

Adan, A.-B. I. (2025). Innovative Discoveries on the Laws of Cosmology and Humanity: New Perspectives on the World. The ABC Insights Journal. <https://doi.org/10.5281/zenodo.18035321>



(a)



(b)

Figure S2 :

Corporal Symmetry and Geophysical Dynamics. (a) Corporal axis of symmetry identified by the vertical line. The black line indicates the line of corporal parity. (b) The Earth's Magnetic Shield: Dynamics and interaction with the solar wind within the magnetosphere. The solid yellow line represents the Earth's rotation axis (tilted at 23.5°). Illustration generated with AI assistance.

Adan, A.-B. I. (2025). Innovative Discoveries on the Laws of Cosmology and Humanity: New Perspectives on the World. The ABC Insights Journal. <https://doi.org/10.5281/zenodo.18035321>

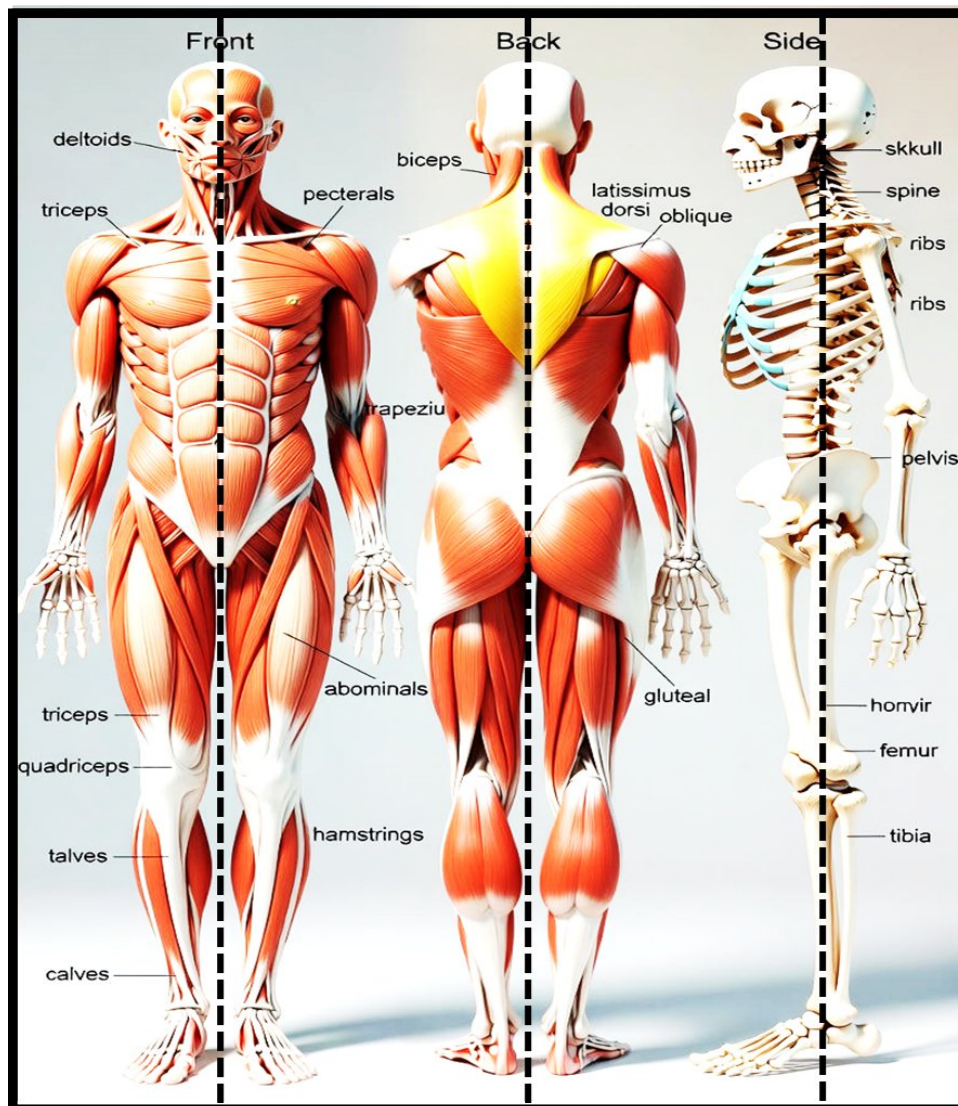


Figure S3: Morphological Symmetry of the Human Body. The line of symmetry is indicated by dashed lines on the human morphological frame. Illustration generated with AI assistance.

Adan, A.-B. I. (2025). Innovative Discoveries on the Laws of Cosmology and Humanity: New Perspectives on the World. The ABC Insights Journal. <https://doi.org/10.5281/zenodo.18035321>

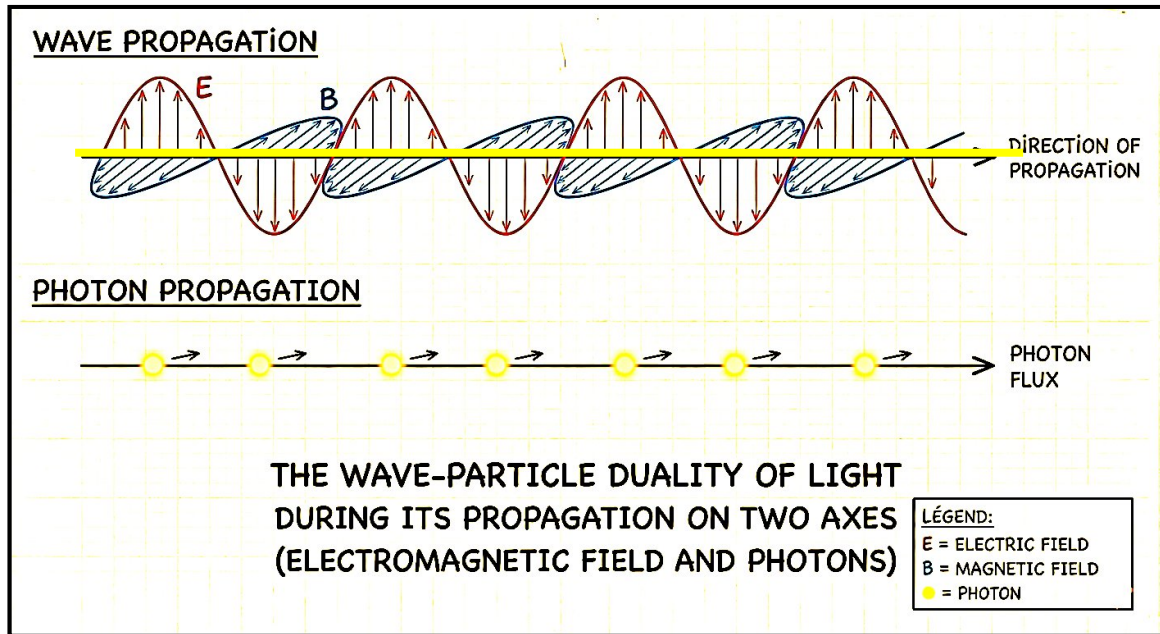


Figure S4: Schematic Representation of Wave-Particle Duality. This diagram illustrates the self-sustaining electromagnetic cycle (Electro + Magneto) of light. Illustration generated with AI assistance.

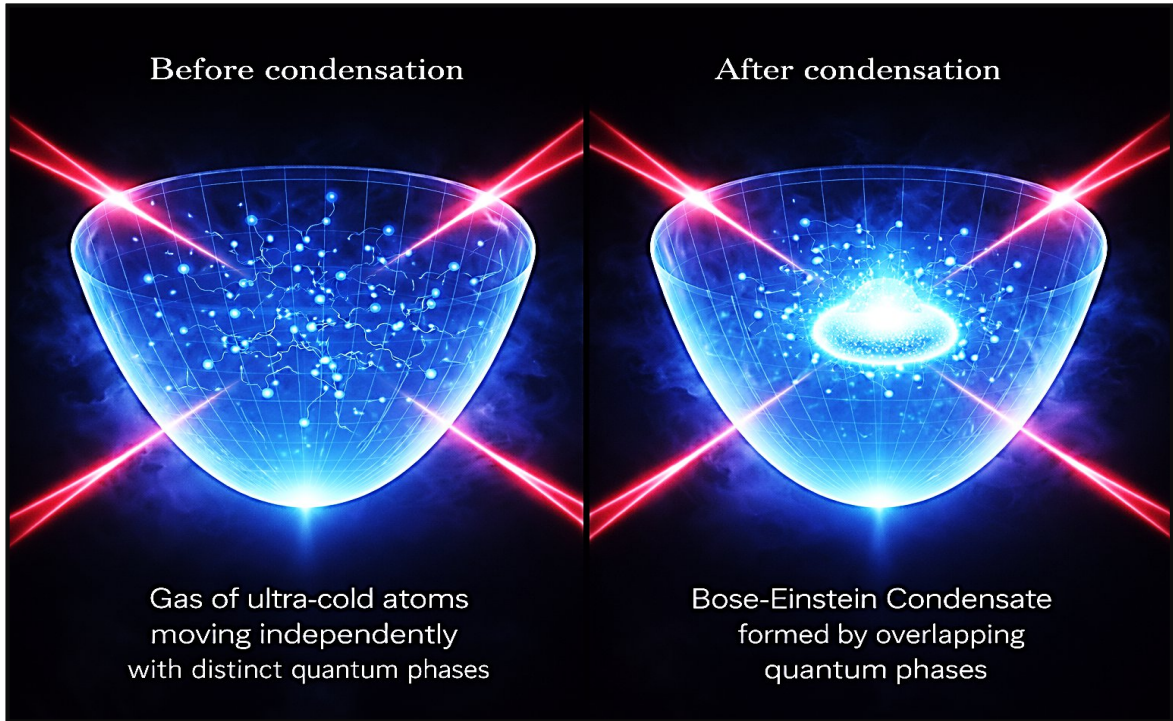


Figure S5 :

Bose-Einstein Condensation: From Disordered Thermal Gas to Coherent Matter-Wave Phase. Illustration générée avec assistance de l'IA.